



Take your analysis to a new level of sensitivity

SureBlue
Reserve™

SureBlue Reserve™ TMB ELISA Substrate

KPL has expanded its recognized line of ready-to-use TMB ELISA substrates to provide a range of sensitivity options. Our latest addition, **SureBlue Reserve**, enables you to easily detect your target analyte by providing maximum sensitivity and exceptionally low background. With detection levels of less than one nanogram per milliliter of HRP along with excellent linearity – SureBlue Reserve provides a superior signal-to-noise ratio, quick results and extremely low lot-to-lot variation.

Excellent Signal-to-Noise Ratio

SureBlue Reserve is the substrate of choice when highest sensitivity is desired. In low end protein detection, SureBlue Reserve provides at least 50% greater sensitivity than KPL's SureBlue TMB Substrate as measured by change in O.D. at 450 nm. It detects less than 0.4 ng/ml of HRP with exceptionally low background, less than 0.03 O.D. at 650 nm.

Highly Consistent

Lot-to-lot variation is less than 10% - making the results highly reproducible. SureBlue Reserve eliminates the need for assay re-optimization every time a new lot is used.

Long Shelf Life

SureBlue Reserve is highly stable and guaranteed to perform for at least 24 months when stored properly for added economy and convenience.

Convenience

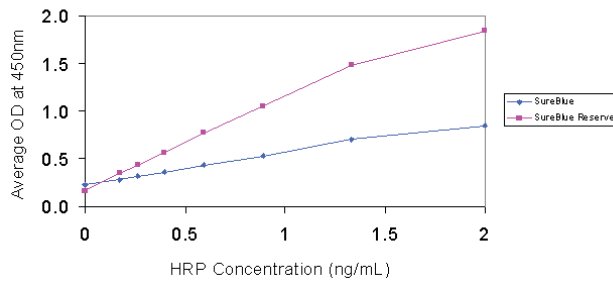
SureBlue Reserve is a one-component, ready-to-use, substrate.

Environmentally Safe

SureBlue Reserve is water-based and contains no DMF or DMSO.

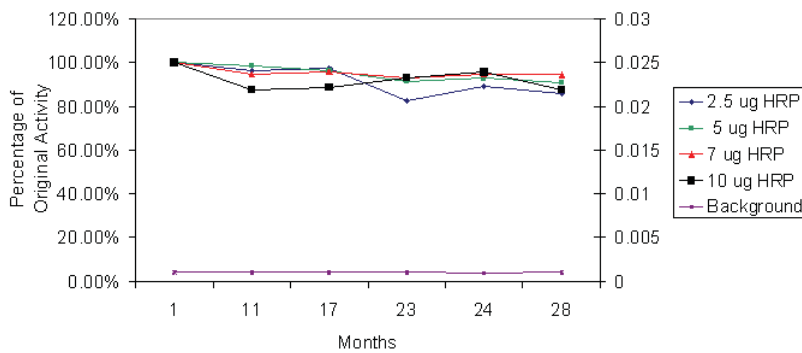


SureBlue Reserve vs. SureBlue™



SureBlue Reserve is the substrate of choice when highest sensitivity is desired with chromogenic substrates. In low end protein detection, SureBlue Reserve provides at least 50% greater sensitivity than SureBlue as measured by the change in optical density units at 450 nm. The data also reveals that SureBlue Reserve's limit of detection is approximately two-fold that of SureBlue.

Long Term Stability of SureBlue Reserve



Substrate activity and background levels were measured for SureBlue Reserve stored at 4°C over a 28 month period. Activity was measured by reacting the substrate with 2.5 ug, 5 ug, 7.5 ug, or 10 ug of HRP conjugate and measuring optical density (O.D.) at 650 nm. Percent of original activity at 1 month is represented above on the primary axis. Background was measured by O.D. of unreacted substrate at 650 nm and is represented on the secondary axis. Results indicate that SureBlue Reserve is extremely stable over a 28 month period with no significant loss of activity or increase in background when stored at 2-8°C. The data also reveals that any slight change in substrate activity will be more apparent with lowering amounts of HRP.

Ordering Information

Catalog#	Description	Size
53-00-01	SureBlue Reserve TMB Microwell Substrate (1-Comp)	100 mL
53-00-02	SureBlue Reserve TMB Microwell Substrate (1-Comp)	4 x 100 mL
53-00-03	SureBlue Reserve TMB Microwell Substrate (1-Comp)	1000 mL

SureBlue Reserve can be provided in a wide variety of custom and bulk packaging options. Contact your KPL sales representative for more details.

To order or for more information on KPL's full line of protein and nucleic acid detection products, contact us at 800.638.3167 / 301.948.7755, FAX 301.948.0169 or visit us at www.kpl.com.

SureBlue and SureBlue Reserve are trademarks of KPL, Inc.

ML280-07

Related Products

TMB Stop Solution
Catalog No. 50-85-05
Size: 400 mL

SureBlue TMB Microwell
Substrate (1-comp)
Catalog No. 52-00-01
Size: 100 mL

HRP Stabilizer
Catalog No. 54-15-01
Size: 200 mL

10% BSA Diluent/Blocking
Solution Concentrate
Catalog No. 50-61-00
Size: 200 mL

Coating Solution Concentrate
Catalog No. 50-84-00
Size: 50 mL

Wash Solution Concentrate
Catalog No. 50-63-00
Size: 800 mL



www.seracare.com
800.676.1881
508.244.6400



www.kpl.com
800.638.3167
301.948.7755

ISO 9001 Registered