

### PLEASE NOTE:

THESE REAGENTS MUST NOT BE SUBSTITUTED FOR THE MANDATORY POSITIVE AND NEGATIVE CONTROL REAGENTS PROVIDED WITH MANUFACTURED TEST KITS.

### NAME AND INTENDED USE

The Seraseq® Euploid Female - Matched Reference Material is formulated for use with whole genome or targeted Next Generation Sequencing (NGS) assays or Microarray assays that screen for Trisomy 21, Trisomy 18 or Trisomy 13 in cell-free fetal DNA (cfDNA). The Seraseq Aneuploidy Negative (Euploid) Reference Material, created with matched (or related) maternal-fetal source material, is intended as a reference material for researchers and Non-Invasive Prenatal Testing (NIPT) labs to monitor library preparation, sequencing, and detection performance. *For Research Use Only. Not for use in diagnostic procedures.*

### SUMMARY

A well-designed quality control program can provide added confidence in the reliability of results obtained for unknown specimens. The use of independent reference products may provide valuable information concerning assay sensitivity and bioinformatics pipeline analysis.

### PRINCIPLES OF THE PROCEDURE

Seraseq Euploid Female - Matched Reference Material contains a non-Trisomic female euploid DNA in female maternal euploid DNA background and is ready to use in NGS or Microarray assays starting with DNA extraction (similar to an actual test sample). The Reference Material contains processed human cfDNA formulated in a commutable matrix (simulated plasma) that is compatible with varying shotgun sequencing and microarray-based methods following extraction.

### REAGENTS

Item No. 0720-0170. 1 vial, 1 mL per vial, 20 ng/mL concentration.

### WARNINGS AND PRECAUTIONS

*For Research Use Only. Not for use in diagnostic procedures.*

CAUTION: Handle Seraseq Euploid Female - Matched Reference Material and all materials derived from human blood products as though they are capable of transmitting infectious agents. Seraseq Euploid Female - Matched Reference Material is manufactured using processed human cfDNA. Purified cfDNA mixture is formulated in a commutable matrix (simulated plasma) containing human protein isolates (SeraCare's SeraCon™ Matribase).

### Safety Precautions

Use Center for Disease Control and Prevention (CDC) recommended universal precautions for handling reference materials and human specimens<sup>1</sup>. Do not pipette by mouth; do not smoke, eat, or drink in areas where specimens are being handled. Clean any spillage by immediately wiping up with 0.5% sodium hypochlorite solution. Dispose of all specimens and materials used in testing as though they contain infectious agents.

### Handling Precautions

Do not use Seraseq Euploid Female - Matched Reference Material beyond the expiration date listed on the vial label. Avoid contamination of the product when opening and closing the vials.

### STORAGE INSTRUCTIONS

Store Seraseq Euploid Female - Matched Reference Material refrigerated at 2 – 8°C. Do not freeze. Samples are designed to be single use.

### INDICATIONS OF REAGENT INSTABILITY OR DETERIORATION

Seraseq Euploid Female - Matched Reference Material is a mixture of human genomic DNA (maternal and fetal). It should appear as a clear to pale yellow liquid. Alterations in this appearance may indicate instability or deterioration of the product and vials should be discarded.

### PROCEDURE

#### Materials Provided

Seraseq Euploid Female - Matched Reference Material is produced from cfDNA extracted from a pregnant patient source sample carrying a female fetus with confirmed euploid status. Material is further processed to maintain natural cfDNA size profile of both fetus and maternal DNA of approximately 170 base pairs in average (Figure 1). The DNA is stabilized and introduced into a dilution of SeraCare's SeraCon™ Matribase (simulated plasma). One (1) mL is provided per tube at 20 ng/mL concentration.

#### Materials Required but not Provided

Refer to instructions supplied by manufacturers of the test kits to be used.

#### Instructions for Use

Seraseq Euploid Female - Matched Reference Material may be inserted into workflows in a manner consistent with plasma fractions prior to extractions. Mix by vortexing to ensure a homogeneous solution. Do not centrifuge. Following extraction, Seraseq Euploid Female - Matched Reference Material must go through the entire library preparation and sequencing steps in parallel with the test specimens. Refer to your usual assay procedures in order to determine the amount of material to use. Each vial is intended for a single use.

#### Quality Control

Seraseq Euploid Female - Matched Reference Material does not have assigned values for trisomy or fetal fraction. There are many reasons why assays may observe variations in performance, which may or may not be of significance. It is therefore recommended that each laboratory qualify the use of each lot of Seraseq Aneuploidy Negative (Euploid) Reference Material with each assay system prior to its routine use.

### INTERPRETATION OF RESULTS

Detection of aneuploidy may vary with different NGS and microarray assays and different test reagent lots. Since the reference material does not have an assigned value, the laboratory must establish an acceptable range for each lot of Seraseq Euploid Female - Matched Reference Material. When results for the product are outside of the established acceptance range, it may indicate unsatisfactory test performance. Possible sources of error include: deterioration of test kit reagents, operator error, faulty performance of equipment, contamination of reagents, or change in bioinformatics pipeline parameters.

### LIMITATIONS OF THE PROCEDURE

Seraseq Euploid Female - Matched Reference Material **MUST NOT BE SUBSTITUTED FOR THE CONTROL REAGENTS PROVIDED WITH MANUFACTURED TEST KITS.**

*TEST PROCEDURES* provided by manufacturers must be followed closely. Deviations from procedures recommended by test kit manufacturers may produce unreliable results. Seraseq Euploid Female - Matched Reference Material is not a calibrator and should not be used for assay calibration. Note that the Seraseq Euploid Female - Matched Reference Material may not be compatible with certain NIPT methods based on the specific assay design and methodology.

Adverse shipping and storage conditions or use of outdated product may produce erroneous results.

### EXPECTED RESULTS

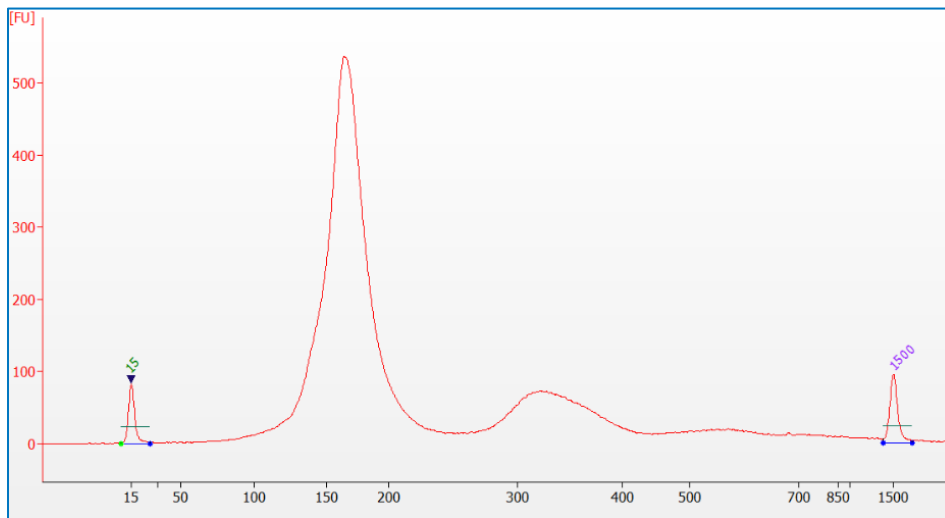
Specific detection of chromosomal abnormality will vary among different assays, different procedures, different lot numbers, and different laboratories. Each laboratory should establish its own range of acceptable values.

### SPECIFIC PERFORMANCE CHARACTERISTICS

Seraseq Euploid Female - Matched Reference Material has been designed for use with whole genome or targeted NGS assays or Microarray assays for the purposes of assessing assay characteristics. The product is manufactured from purified human genomic DNA. Although designed to produce a negative (Euploid) result, Seraseq Euploid Female - Matched Reference Material does not have assigned values. Procedures for implementing a quality assurance program and monitoring test performance on a routine basis must be established by each individual laboratory.

### REFERENCES

1. Siegel JD, Rhinehart E, Jackson M, Chiarello L, and the Healthcare Infection Control Practices Advisory Committee, 2007 Guideline for Isolation Precautions: Preventing Transmission of Infectious Agents in Healthcare Settings.



**Figure-1:** Representative cfDNA size distribution for Seraseq® Euploid Female - Matched Reference Material (X-axis represents base pairs, while Y-axis represents relative units).