

AccuVert™ HBV Seroconversion Panel

PHM939 (0605-0041 / Batch #10494766)

OVERVIEW

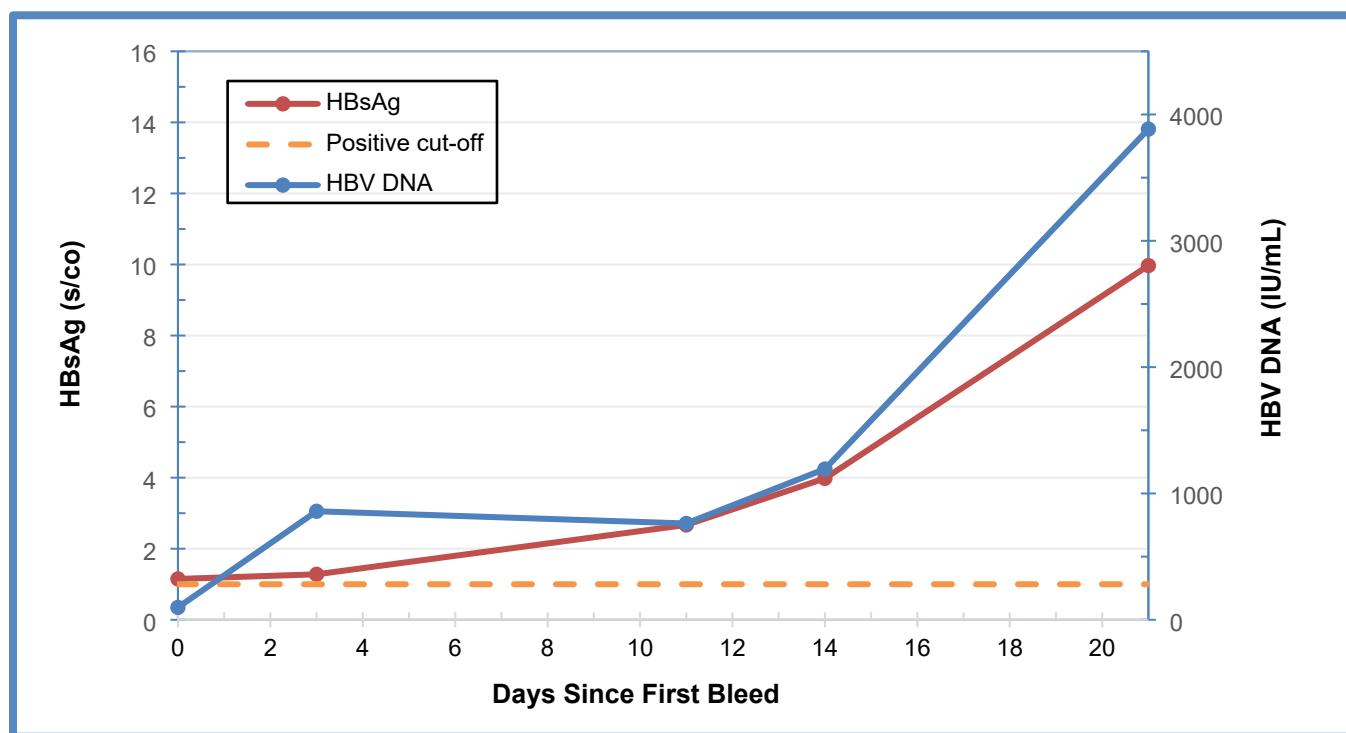
AccuVert™ HBV Seroconversion Panel PHM939, 0605-0041 (Batch #10494766) is a 5-member HBV Seroconversion panel. This data sheet contains test results specific for HBV Seroconversion Panel PHM939, genotype A. PHM939 is a five member series representing collections from a single individual over 21 days in 2001. HBV DNA is positive from the first collection; other HBV markers are negative as expected in very early infection. Results for two HBsAg methods, one HBeAg method, one HBV DNA test, and HBV Ab markers (Core Total and Core IgM) are included.

Panel members are undiluted aliquots from plasma units collected from a single donor. No preservatives were added.

CAUTION: Potentially infectious materials. Follow Universal Precautions. Panel members were found positive for HBV DNA and all were found negative for anti-HIV and anti-HCV. This does not ensure the absence of these or other human pathogens.

For Research Use Only. Not for use in diagnostic procedures. Data are provided for informational purposes. LGC SeraCare Life Sciences does not claim that others can duplicate test results exactly.

AccuVert™ HBV Seroconversion Panel



This graph demonstrates the evolution of early HBV infection, illustrated with test results over time from the Roche COBAS® AmpliPrep /COBAS® TaqMan® HBV DNA v2.0 and Bio-Rad Genetic Systems™ HBsAg EIA 3.0 test methods.

AccuVert™ HBV

Seroconversion Panel

PHM939 (0605-0041 / Batch #10494766)

Panel Member Information

Panel Member	SeraCare Batch #	SeraCare Donor ID #	Collection Date	Days Since 1 st Collection
01	9233729	BD107168	16-Jul-2001	0
02	9233730	BD107168	19-Jul-2001	3
03	9233731	BD107168	27-Jul-2001	11
04	9233732	BD107168	30-Jul-2001	14
05	9233733	BD107168	06-Aug-2001	21

HBV DNA^{1,2}

Panel Member	Roche COBAS® AmpliPrep / COBAS® TaqMan® HBV Test , v2.0 (IU/mL)	Roche cobas® 6800/8800 HBV DNA (IU/mL)
01	9.80 x 10¹	1.07 x 10²
02	8.59 x 10²	4.47 x 10²
03	7.63 x 10²	5.40 x 10²
04	1.19 x 10³	8.69 x 10²
05	3.88 x 10³	2.60 x 10³
Test Date	12-May-2020	20-Nov-2024
Test Site	RL	RL
Kit Part Code	NA	NA
Kit Lot No.	F22485	NA
Kit Exp. Date	31 Jan 2021	NA

¹Results are reported as International Units per mL (IU/mL); positive/reactive results are noted in bold red.

²Results are reported as the mean result of duplicate testing.

RL = Reference Lab; NA = Not Available

AccuVert™ HBV

Seroconversion Panel

PHM939 (0605-0041 / Batch #10494766)

HBsAg^{1,2}

Panel Member	Abbott ARCHITECT HBsAg Qualitative (s/co)	Bio-Rad Genetic Systems™ HBsAg EIA 3.0 (s/co)
01	0.97, 1.06*	1.15
02	1.42	1.28
03	2.97	2.67
04	4.94	3.98
05	11.74	9.97
Test Date	07-Nov-2024	08-Nov-2024
Test Site	LGC	LGC
Kit Part Code	4P53	32591
Kit Lot No.	65308FZ00	376VCC-05
Kit Exp. Date	18-Jan-2025	30-Apr-2025

¹Results are reported as a signal to cutoff ratio (s/co); positive/reactive results are noted in bold red.

²Results are reported as the mean result of duplicate testing.

*Interpretation variability; individual replicates reported.

LGC = LGC SeraCare

HBV Antibody and other tests^{1,2}

Panel Member	Abbott ARCHITECT Core Total (s/co)	Abbott ARCHITECT Core IgM (s/co)	DiaSorin ETI-EBK PLUS HBeAg (s/co)
01	0.14	0.05	0.06
02	0.10	0.06	0.13
03	0.11	0.05	0.13
04	0.12	0.05	0.16
05	0.12	0.06	0.37
Test Date	12-May-2020	11-May-2020	12-May-2020
Test Site	LGC	LGC	LGC
Kit Part Code	6L22	6L23	P001930
Kit Lot No.	10191BE00	08042BE00	0600700A
Kit Exp. Date	28 Oct 2020	05 Nov 2020	30 Sep 2020

¹Results are reported as a signal to cutoff ratio (s/co); positive/reactive results are noted in bold red.

²Results are reported as the mean result of duplicate testing

LGC = LGC SeraCare

The package insert for this panel can be found at
www.seracare.com.

A printed copy of the package insert or data sheet may
be requested by email at CDx-Info@LGCGroup.com or
by phone at 508.244.6400.