

AccuVert™ HIV-1 Seroconversion Panel

PRB974 (0600-0258) / Batch #10440486

OVERVIEW

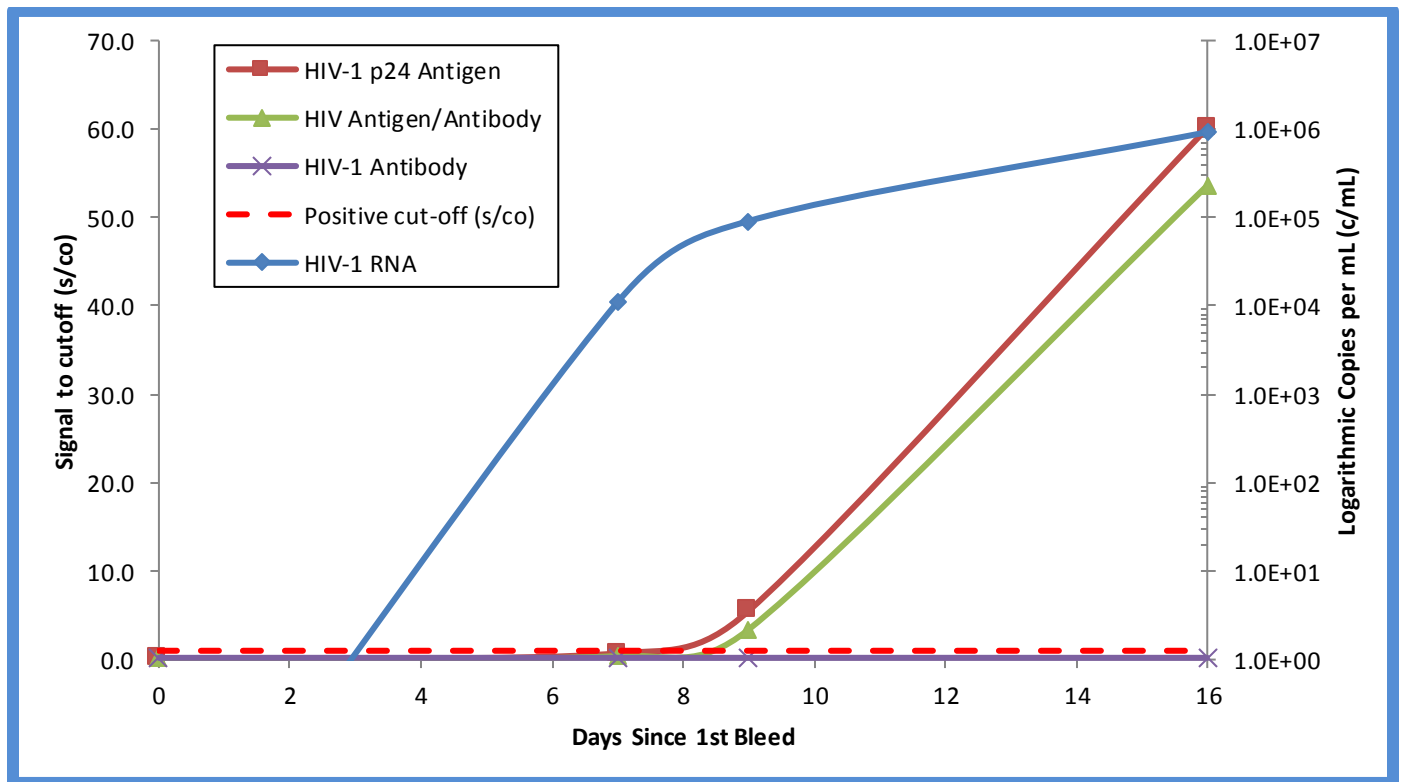
AccuVert™ HIV-1 Seroconversion Panel PRB974 (0600-0258) / Batch #10440486 is a 4-member panel consisting of undiluted, naturally occurring plasma samples (1 vial per member, 1.2mL). Panel members represent serial bleeds collected from a single individual over 16 days in 2000 during the development of an HIV infection and subsequent response.

Panel Member number 2 is a moderately positive HIV RNA sample, challenging for HIV antigen assays. Member number 3 is detected at very low signal to cutoff by all HIV Ag/Ab methods tested, and Member number 4 is a very challenging sample for anti-HIV assays.

For Research Use Only. Not for use in diagnostic procedures. Data are offered for informational purposes only. SeraCare Life Sciences does not claim these results can be duplicated exactly.

CAUTION: Potentially infectious materials. Follow Universal Precautions. Some panel members were found positive for markers of HIV infection; all were found negative for HBsAg and anti-HCV. This does not ensure the absence of these or other human pathogens.

Evolution of HIV Markers in Early Infection



This graph demonstrates the evolution of early HIV infection amongst panel members from the Roche Cobas HIV-1 RNA, Perkin Elmer HIV-1 p24 Antigen, Abbott ARCHITECT HIV Antigen/Antibody, and Avioq HIV-1 Antibody.

AccuVert™ HIV-1 Seroconversion Panel

PRB974 (0600-0258) / Batch #10440486

Panel Member Information

Panel Member	SeraCare Batch#	Bleed Date	Days Since 1 st Bleed	Fiebig Stage ¹
01	9251239	14-Jun-2000	0	NA
02	9251240	21-Jun-2000	7	I
03	9251241	23-Jun-2000	9	II
04	9251242	30-Jun-2000	16	II/III

¹Fiebig stages are categories that define phases of early HIV infection. See Fiebig E.W., et al. Dynamics of HIV viremia and antibody seroconversion in plasma donors: implications for diagnosis and staging of primary HIV infection. AIDS 2003, 17:1871-9, and Lee H.Y., et al. Modeling sequence evolution in acute HIV-1 infection. J Theor. Biol. 2009, 261:341-360.

HIV RNA, HIV Antigen

Panel Member	Abbott HIV RealTime HIV-1 RNA m2000 (c/mL) ¹	Roche COBAS® AmpliPrep COBAS® TaqMan HIV-1 Test v2.0	Siemens Versant HIV-1 RNA 3.0 Assay (bDNA) ¹	bioMérieux VIDAS p24 II (pg/mL) ²	Perkin Elmer Alliance HIV-1 p24 Ag ELISA (s/co) ³
01	BLD	BLD	BLD	<3.0	0.1
02	6.1 x 10³	1.1 x 10⁴	3.8 x 10³	<3.0	0.7
03	7.4 x 10⁴	9.1 x 10⁴	4.7 x 10⁴	22.5	5.5
04	1.0 x 10⁶	9.2 x 10⁵	>5.0 x 10⁵	347.2	60.1
Test Date	01-Feb-2012	31-Jan-2012	02-Feb-2012	12-Mar-2012	17-Sep-2019
Test Site	RL	SC	RL	RL	SC
Kit Part Code	6L18	05212308 190	127418 A & B	30117	NEK050A
Kit Lot No.	10055501	P07463	D088	120507-0	990-19251
Kit Exp. Date	31-Dec-2012	31-Aug-2012	06-Jun-2012	17-Jul-2012	01-Apr-2020

¹Quantitative HIV RNA results are expressed as copies/mL. Members considered reactive are noted in bold red.

²Quantitative HIV Antigen results are the means of duplicates expressed as pg/mL. Ratios ≥3.0 are considered reactive and noted in bold red.

³Immunoassay results are means of duplicates expressed as signal to cutoff ratios (s/co). Ratios ≥1.0 are considered reactive and noted in bold red.

BLD = Below the Limit of Detection

RL = Reference Lab; SC = SeraCare

AccuVert™ HIV-1 Seroconversion Panel

PRB974 (0600-0258) / Batch #10440486

HIV Antigen/Antibody

Panel Member	Abbott HIV Ag/Ab ARCHITECT Combo (s/co) ^{1,2}	Abbott HIV Ag/Ab AxSYM Combo (s/co) ^{1,2}	Abbott HIV Ag/Ab PRISM Combo (s/co) ^{1,2}	Bio-Rad Genscreen Ultra HIV Ag/Ab Combo (s/co) ^{1,2}
01	0.1	0.5	0.1	0.3
02	0.4	0.6	0.3	0.4
03	3.4	2.3	3.3	1.4
04	53.6	19.8	34.5	8.8
Test Date	30-Jan-2012	06-Feb-2012	06-Feb-2012	16-Mar-2012
Test Site	RL	RL	RL	SC
Kit Part Code	2P36	2G83-20	7G46-48	72386
Kit Lot No.	08414LI00	11457LF00	12321LI00	1C1067
Kit Exp. Date	30-Apr-2012	16-May-2012	17-Nov-2012	30-Aug-2012

¹Results are reported as a signal to cutoff ratio (s/co); positive/reactive results are noted in bold red.

²Results are reported as the mean result of duplicate testing.

SC = SeraCare; RL = Reference Lab

HIV Antigen/Antibody

Panel Member	Bio-Rad GS HIV Combo Ag/Ab EIA (s/co) ^{1,2}	Murex HIV Ag/Ab Combination (s/co) ^{1,2}	Alere Determine™ HIV-1/2 Ag/Ab Combo HIV Ag	Alere Determine™ HIV-1/2 Ag/Ab Combo HIV Ab
01	0.2	0.3	NEG	NEG
02	0.5	0.4	NEG	NEG
03	3.5	1.7	NEG	NEG
04	11.8	16.9	POS	NEG
Test Date	15-Mar-2012	31-Jan-2012		05-Mar-2012
Test Site	SC	RL		SC
Kit Part Code	26217	7G79-11		7D26-46
Kit Lot No.	315FJJ-02	D078310		110524ALCE 111228ALCE
Kit Exp. Date	27-Sep-2012	31-Dec-2012		25-Mar-2012 11-Nov-2012

¹Results are reported as a signal to cutoff ratio (s/co); positive/reactive results are noted in bold red.

²Results are reported as the mean result of duplicate testing.

POS = Positive; NEG = Negative

RL = Reference Lab; SC = SeraCare

AccuVert™ HIV-1 Seroconversion Panel

PRB974 (0600-0258) / Batch #10440486

HIV Antibody

Panel Member	Avioq HIV-1 Microelisa System (s/co) ^{1,2}	Bio-Rad GS HIV-1/HIV-2 Plus O (s/co) ^{1,2}	Siemens HIV1/O/2 Enhanced ADVIA Centaur (s/co) ^{1,2}
01	0.2	0.1	<0.05
02	0.2	0.1	<0.05
03	0.2	0.1	<0.05
04	0.2	0.2	1.0
Test Date	01-Feb-2012	31-Jan-2012	01-Feb-2012
Test Site	SC	SC	RL
Kit Part Code	100384	32588	01622429
Kit Lot No.	J2299	279FBB-05	82415114
Kit Exp. Date	12-Oct-2012	15-May-2012	20-Apr-2012

¹Results are reported as a signal to cutoff ratio (s/co); positive/reactive results are noted in bold red.

²Results are reported as the mean result of duplicate testing.

RL = Reference Lab; SC = SeraCare

HIV Confirmatory

Panel Member	Bio-Rad GS HIV-1 Western Blot Band Pattern	Bio-Rad GS HIV-1 Western Blot Result	Calypte MAXIM HIV-1 Western Blot Band Pattern	Calypte MAXIM HIV-1 Western Blot Result	Innogenetics INNO-LIA HIV I/II Band Pattern	Innogenetics INNO-LIA HIV I/II Result
01	No bands	NEG	No bands	NEG	No Bands	NEG
02	No bands	NEG	No bands	NEG	No Bands	NEG
03	No bands	NEG	No bands	NEG	No Bands	NEG
04	No bands	NEG	No bands	NEG	No Bands	NEG
Test Date	09-Feb-2012		06-Feb-2012		12-Mar-2012	
Test Site	SC		SC		RL	
Kit Part Code	1971101		98002		INX22206	
Kit Lot No.	109338		A2322-227		220376	
Kit Exp. Date	24-Jun-2012		17-Nov-2012		31-Jan-2013	

NEG = Negative

RL = Reference Lab; SC = SeraCare

The package insert for this panel can be found at www.seracare.com.

A printed copy of the package insert or data sheet may be requested by email at info@seracare.com or by phone at 508.244.6400.