



Gold Conjugates

Easy to use, highly sensitive systems for visualizing proteins

Versatile and Convenient Probes

KPL's line of colloidal gold-labeled reagents include anti-human, anti-mouse, anti-rabbit, anti-biotin antibodies and streptavidin. These antibodies are affinity purified to minimize cross-reactivity. Anti-biotin and streptavidin conjugates provide a sensitive indication of biotin with low background.

Advantages of gold conjugates

- Different sized gold particles (5 nm and 40 nm) allow for a variety of uses for these conjugates.
- Greater stability in liquid form than enzyme conjugates.
- Eliminates the need for an enzyme blocking step.
- 5 nm gold particles permit better penetration of tissue due to their small size.
- Highly sensitive technique detects 60 picograms of protein in dot blotting.

Silver Enhancer Kits

For maximum signal, KPL's Silver Enhancer Kits amplify the gold conjugates signal 10 to 100 times. The resulting brown/black silver stain is permanent and offers sharp resolution and contrast with conventional counterstains.

Applications for Gold Conjugates

40 nm gold conjugates are ideal for use in these applications.

- Lateral flow assays
- Light Microscopy
- Blotting
- Immunohistochemistry and *in situ* hybridization applications

5 nm gold conjugates are ideal for use in these applications.

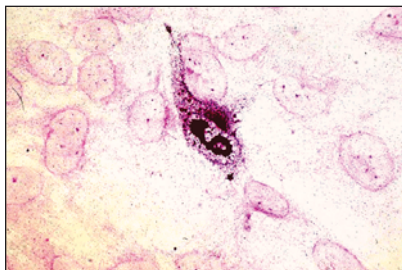
- Light Microscopy
- Electron Microscopy



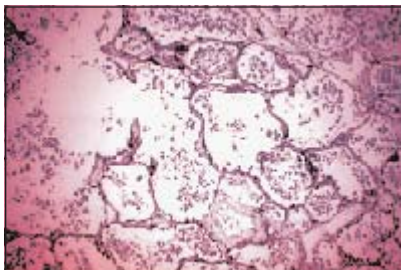
FREQUENTLY ASKED QUESTIONS

What are the advantages of using gold conjugates versus enzyme-labeled conjugates?

One advantage is the possibility of cross-reactivity with naturally-occurring enzymes is non-existent, as compared to enzyme-labeled conjugates. Another advantage is a single-step detection versus enzyme conjugate and substrate.



CMV infected cells, human anti-CMV serum with gold-labeled goat anti-human IgG (H+L), 5 nm with Microscopy Silver Enhancer Kit and Eosin.



Human normal lung tissue, anti-epithelial membrane antigen with gold-labeled goat anti-mouse IgG (H+L), 5 nm with Microscopy Silver Enhancer Kit and Contrast BLUE.

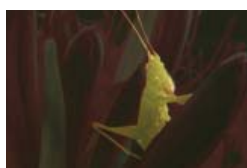
Ordering Information

Catalog#	Description	Size
Gold Labeled		
<i>Each system contains Gold Conjugate Dilution Buffer</i>		
57-10-06	Anti-Human IgG (H+L) System, 40 nm	3.0 mL
58-10-06	Anti-Human IgG (H+L) System, 5 nm	1.0 mL
57-18-06	Anti-Mouse IgG (H+L) System, 40 nm	3.0 mL
58-18-06	Anti-Mouse IgG (H+L) System, 5 nm	1.0 mL
57-15-06	Anti-Rabbit IgG (H+L) System, 40 nm	3.0 mL
58-15-06	Anti-Rabbit IgG (H+L) System, 5 nm	1.0 mL
57-40-06	Anti-Biotin System, 40 nm	3.0 mL
58-40-06	Anti-Biotin System, 5 nm	1.0 mL
57-30-06	Streptavidin System, 40 nm	3.0 mL
58-30-06	Streptavidin System, 5 nm	1.0 mL

Silver Enhancer Kits

55-22-01	Silver Enhancer Kit for Microscopy <i>Kit includes: 1 mL of Gold Conjugate 100 mL of Gold Conjugate Dilution Buffer</i>	
	Solution A	25 mL
	Solution B	25 mL
55-22-02	Silver Enhancer Kit for Membrane Applications <i>Kit includes: 3 mL of Gold Conjugate 250 mL of Gold Conjugate Dilution Buffer</i>	
	Solution A	250 mL
	Solution B	250 mL

To order or for more information on KPL's full line of protein detection products, contact us at 800.638.3167 / 301.948.7755, fax 301.948.0169 or visit us at www.kpl.com.



Pictured on front and above: adult grasshopper.



www.seracare.com
800.676.1881
508.244.6400



www.kpl.com
800.638.3167
301.948.7755