

AP Membrane Color Substrates

See **RED** and **PURPLE** in your Western blots!

BCIP/NBT (5-Bromo-4-chloro-3-indolyl phosphate/nitroblue tetrazolium) is the most commonly used substrate for alkaline phosphatase (AP) detection in Western blotting due to its high sensitivity and low background staining. Traditional formulations of BCIP/NBT produce a deep purple color when reacted with AP conjugates.

Now KPL's new BCIP/INT formulation, FirePhos™ AP Membrane Substrate, forms a red precipitate, providing a choice of red or purple precipitating AP substrates to better optimize your individual assays.

- FirePhos™ AP Membrane Substrate
- BCIP/NBT Phosphatase Substrate

Sensitive and reproducible

No matter which substrate you choose, you'll achieve sensitive and reproducible detection of proteins on Western blots. Both substrates provide sensitivity in the low nanogram range with minimal background

(Figure 1), sharp band resolution and a clear image. The color produced is stable and linear over a wide dynamic range.

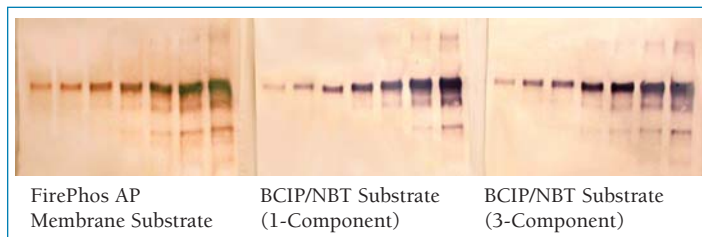


Figure 1: KPL's substrates for alkaline phosphatase detection in Western blotting demonstrate high sensitivity and low background. A two-fold dilution series from 250 ng to 3.9 ng of mouse IgG was loaded onto a Tris-HCl gradient gel, then blotted onto nitrocellulose. The antigen was detected with ReserveAP™ Goat Anti-mouse Conjugate (KPL) followed by FirePhos AP Membrane and BCIP/NBT Substrates (1-component and 3-component).



AP Membrane Color Substrates

Non-fading

FirePhos and BCIP/NBT produce a bright red or purple precipitate that can be deposited on nitrocellulose and PVDF membranes. They resist fading when exposed to light.

Convenient

These substrates are supplied as convenient one-component solutions that are ready to use. KPL's BCIP/NBT is also available as a three-component solution. Both substrates are provided in several sizes to meet your needs.

Ordering Information

Catalog#	Description	Size
FirePhos™ AP Membrane Substrate		
50-81-30	FirePhos Membrane Phosphatase Substrate (1-Component)	100 mL
50-81-40	FirePhos Membrane Phosphatase Substrate (1-Component)	400 mL
50-81-34	FirePhos Membrane Phosphatase Substrate (1-Component)	1 L
BCIP/NBT Phosphatase Membrane Substrate		
50-81-18	BCIP/NBT Membrane Phosphatase Substrate (1-Component)	100 mL
50-81-07	BCIP/NBT Membrane Phosphatase Substrate (1-Component)	600 mL
50-81-10	BCIP/NBT Membrane Phosphatase Substrate (1-Component)	1 L
50-81-00	BCIP/NBT Membrane Phosphatase Substrate (3-Component)	300 mL
Membrane Blocking		
71-83-00	Detector Block (5X)	240 mL

KPL's colorimetric membrane substrates are part of our comprehensive line of Western blotting kits and reagents. Ask about our AP chemiluminescent substrates that can significantly lower the detection limit of an assay.

To order or for more information, contact us at 800.638.3167 / 301.948.7755, fax 301.948.0169 or visit us at www.kpl.com.

FirePhos and ReserveAP are trademarks of KPL.

ML348-04

For research use only.
©2007 KPL, Inc. All rights reserved.



Improve your assay performance even further with ReserveAP™-labeled Antibodies!

KPL's new ReserveAP™ Alkaline Phosphatase-labeled Conjugates exhibit high potency and consistent performance in immunoassays. These conjugates are the result of advances in our conjugation chemistry and offer high signal and low background while meeting KPL's standards for stability and reproducibility. They are ideal for demanding immunoassays that require high detection sensitivity, including ELISA, Western blotting and immunohistology. Visit www.kpl.com for more information on KPL's ReserveAP conjugates.



www.seracare.com
800.676.1881
508.244.6400



www.kpl.com
800.638.3167
301.948.7755