



SignalOCK™ ChemiWestern Kits

Head and Shoulders Above the Rest

Looking for fast, sensitive Western blot results with low background? SignalOCK Chemi-Western Kits stand out from the rest. Each kit combines a powerful chemiluminescent substrate, a non-protein blocker, and an effective wash solution to deliver clear results for your more challenging protein detection needs.

Fast - 1-minute results

SignalOCK ChemiWestern Kits have a highly sensitive substrate so you see more with a 1-minute exposure than with a 30-minute exposure with other providers' kits. Now spend less time optimizing and more time analyzing your results.

Sensitive - femtogram-level detection

SignalOCK ChemiWestern Kits provide sensitivity in the nanogram range with only a 1-minute exposure. A longer exposure offers sensitivity in the femtogram range.

Clean - bright bands with low background

Whether used on nitrocellulose or PVDF membranes, each kit contains a non-protein blocker and effective wash solution to provide superior signal-to-noise contrast.

Easy - optimized protocol

Different kits meet diverse user needs with exceptional convenience. No matter whether you use film or imager, nitrocellulose or PVDF membrane, the kits offer an optimized easy-to-follow protocol.



Compare SignalLOCK™ ChemiWestern Kit with Other Leading Blotting Kits

Faster

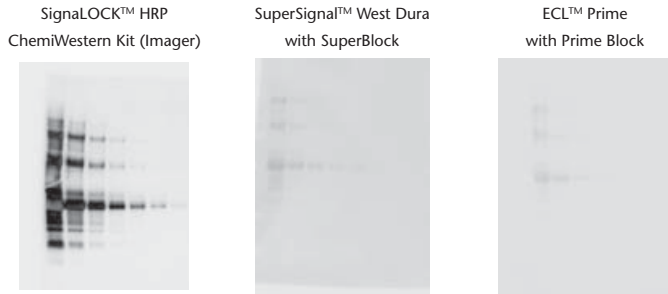


Figure 1. Comparison of SignalLOCK HRP ChemiWestern Kit (Imager), SuperSignal West Dura, and ECL Prime and their recommended blockers. Immunoblots were imaged for 1 minute after application of substrate. The SignalLOCK blot bands represent nanogram to picogram detection of protein.

More Sensitive

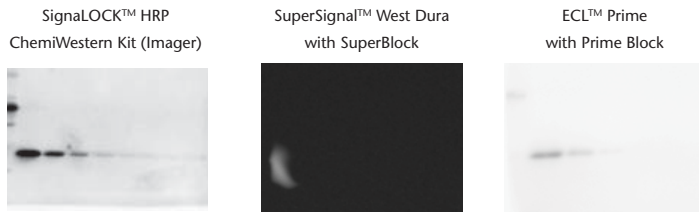


Figure 2. Comparison of femtogram sensitivity, with 20-minute exposure using SignalLOCK HRP ChemiWestern Kit (Imager), SuperSignal West Dura, and ECL Prime and their recommended blockers. Membranes were blocked overnight and protein-detected using a buildup of rabbit anti-lysozyme, followed by HRP-labeled goat anti-rabbit IgG (H+L).

SignalLOCK™ ChemiWestern Blotting Kits

Detection	Catalog No.	Kit Components	Sensitivity	Number of Blots per Kit
SignalLOCK HRP ChemiWestern Kit (Film)	54-53-00	LumiGLO Reserve™ Substrate, SignalLOCK Blocking Solution, wash solution	Low Femtogram	10
SignalLOCK HRP ChemiWestern Kit (Imager)	54-54-00	LumiGLO Ultra™ Substrate, SignalLOCK Blocking Solution, wash solution	Low Femtogram	10
SignalLOCK AP ChemiWestern Kit (Film/Imager)	54-56-00	PhosphaGLO Reserve™ Substrate, SignalLOCK Blocking Solution, wash solution	High Femtogram	10

To order or for more information on SignalLOCK kits, visit www.kpl.com/SignalLOCK or contact us at 800.638.3167 / 301.948.7755.

 www.facebook.com/KPLInc
Like us on Facebook!

 www.YouTube.com/KPLBio
Watch our Western blot videos!

ML447-02
For research use only.

Copyright 2012 KPL, Inc. All rights reserved.
SignalLOCK is a trademark of KPL, Inc.
SuperSignal is a registered trademark of Thermo Fisher Scientific, Inc. and its subsidiaries.
ECL and Prime are trademarks of GE Healthcare.

KPL is Here to Help

KPL's commitment to providing high-quality detection reagents and kits is equaled by our insistence on outstanding technical support. We provide you with the full support of our professional team of scientists. Their knowledge, experience, and support will help you with optimization as you transition to our highly sensitive Western blot kits.

Contact KPL Technical Services at 800.638.3167 (USA) or 301.948.7755, by email at techserv@kpl.com, or on Facebook at www.facebook.com/KPLInc.

 SeraCare
LIFE SCIENCES

www.seracare.com
800.676.1881
508.244.6400

 KPL
Power Your Immunoassays

www.kpl.com
800.638.3167
301.948.7755

ISO 9001 Registered